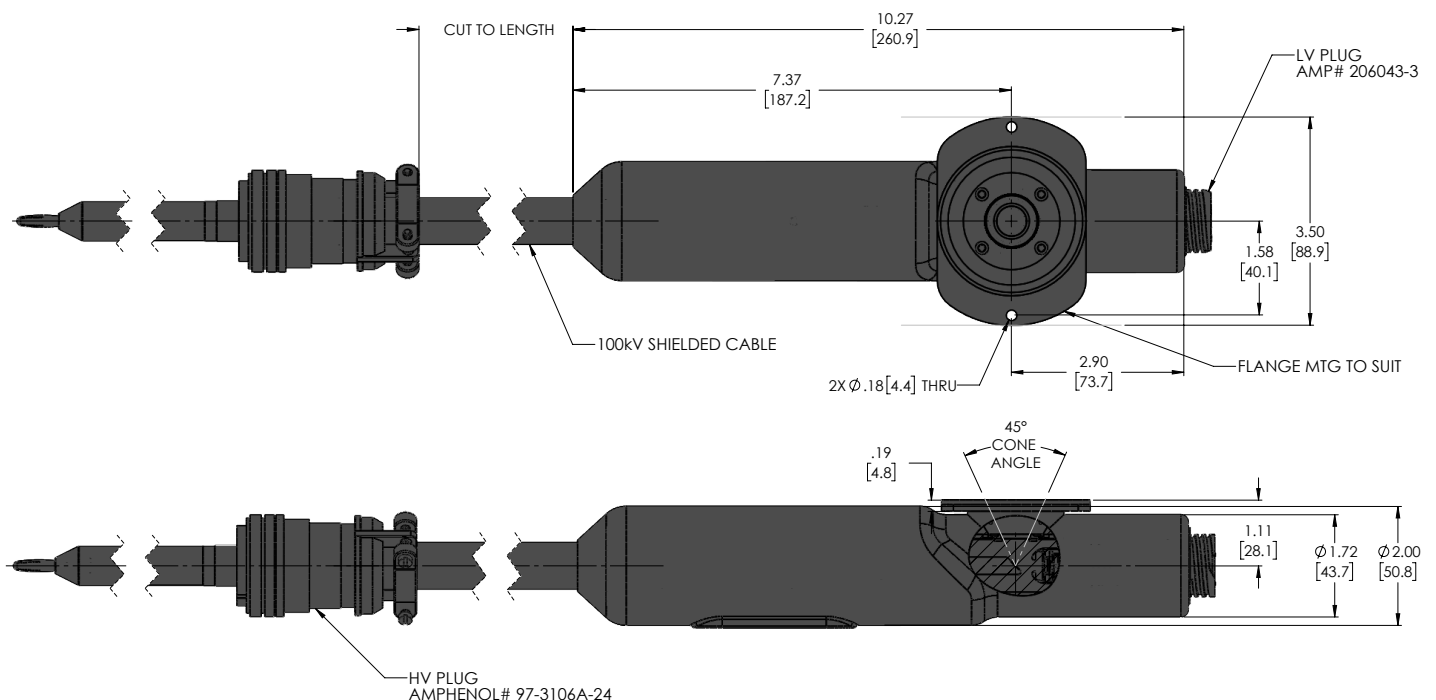
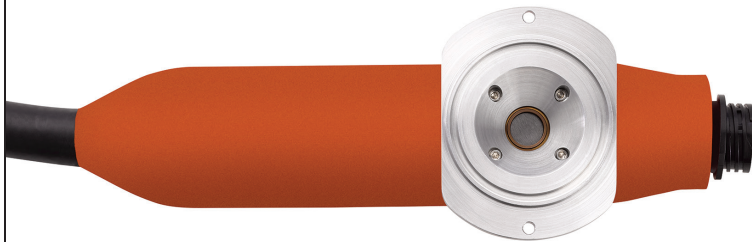


Our **Micro Focus X-Ray Tube** is designed for applications requiring micro feature recognition.

Features include:

- **Small focal spot, 5 μ m resolution** with small footprint of a silicon Potted Tube.
- **Available without silicon potting for OEMs** for easy integration and to shield radiation and isolate high voltage.
- **Customizable high voltage cable.***

*Requires high voltage power supply, more information upon request.



SPECIFICATIONS

Polarity	Grounded Cathode
Flange Type	(2) Thru Holes
Max. Voltage Range	20-100kV
Max. Power	12W ¹
Focal Spot	5 μ m
Window Thickness	50 μ m/0.005in Beryllium
Beam Angle	45° ²
Target Material	W
Cooling	Forced air, 150 CFM fan recommended

¹ Refer to Figures 1 and 2 to determine optimal operational parameters.

² 60° Beam Angle available upon request.

GENERAL

The customer is responsible for controlling the high voltage and filament current and designing the cooling system. Selecting an appropriate power supply is crucial to protect the X-ray tube from overcurrent and overvoltage. Sufficient cooling is required when operating the X-ray tube. Failure to do so may damage the tube and radiation protection, posing a hazard.

RADIATION PROTECTION

The customer is responsible for radiation protection and must ensure compliance with local regulatory requirements and limit values.



Connect with Us
on LinkedIn



Scan the QR code
for a digital version
of this spec sheet

FIGURE 1

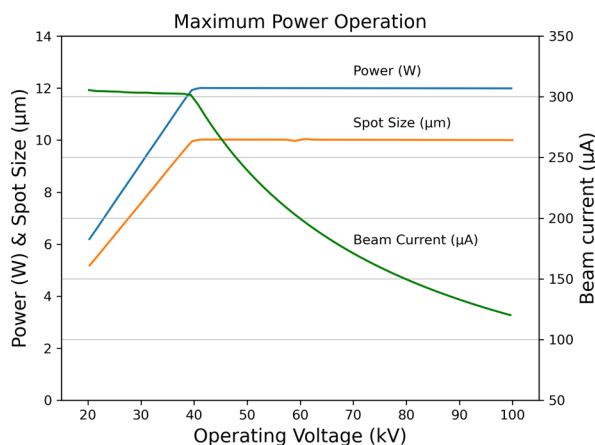


FIGURE 2

