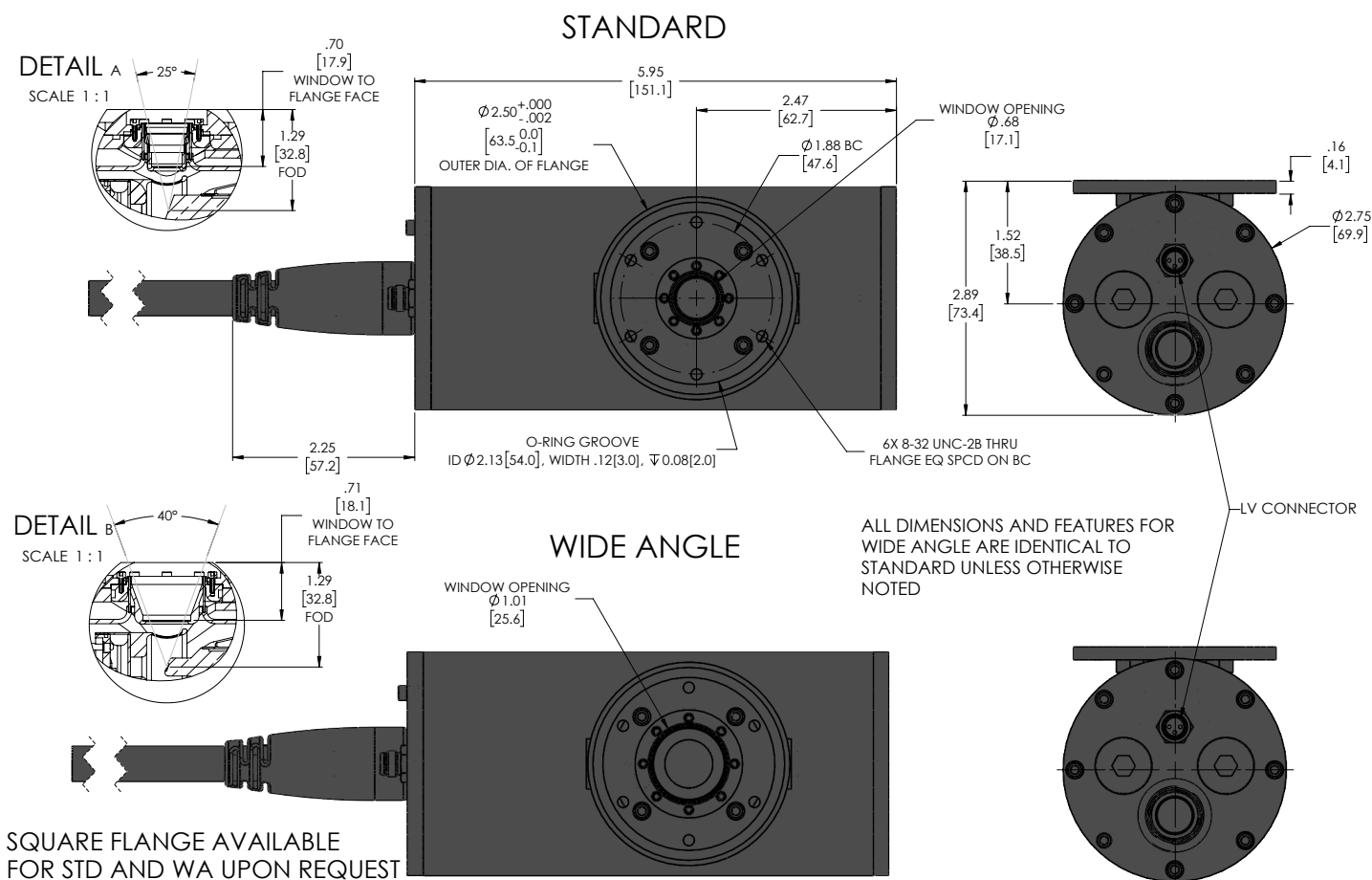


Our **Packaged X-Ray Tube** is suitable for users wanting a durable and cost-effective plug and play solution. This product includes high-voltage and low-voltage cables.

Features include:

- **Up to 60kV and 50W.**
- **Full radiation shielding and high voltage isolation.**
- **Maximum thermal properties** enable continuous operation.
- **Add-on heatsink available upon request.**
See the **Aquachill** and **Windchill** for more details.



SPECIFICATIONS

Polarity	Grounded Cathode
Flange Type	(6) 8-32 thread
Max. Voltage	60kV ¹
Max. Power	75W ¹
Max. Filament Current	1.7A, 2.0A ²
Anode Current	2mA for 1.7A filament 5mA for 2.0A filament
Beam Angle	25°, 40°
Focal Spot	50µm ±50% tolerance
Window Thickness	127µm ³
Target Material	Mo, W, Rh, Cu ⁴
Cooling	Air cooled, 150 CFM fan recommended
Safety	Thermal Switch ⁵

¹ Refer to Figure 1 and 2 to determine optimal operational parameters.

² Information about 2.0A filament option can be found at <https://microxray.com>.

³ More window options available upon request.

⁴ Other target materials available upon request.

⁵ Shuts off device when internal temperature reaches 70°C.

GENERAL

The customer is responsible for controlling the high voltage and filament current and designing the cooling system. Selecting an appropriate power supply is crucial to protect the X-ray tube from overcurrent and overvoltage. Sufficient cooling is required when operating the X-ray tube. Failure to do so may damage the tube and radiation protection, posing a hazard.

RADIATION PROTECTION

The customer is responsible for radiation protection and must ensure compliance with local regulatory requirements and limit values.



Connect with Us
on LinkedIn



Scan the QR code
for a digital version
of this spec sheet

FIGURE 1 - 1.7mA Filament

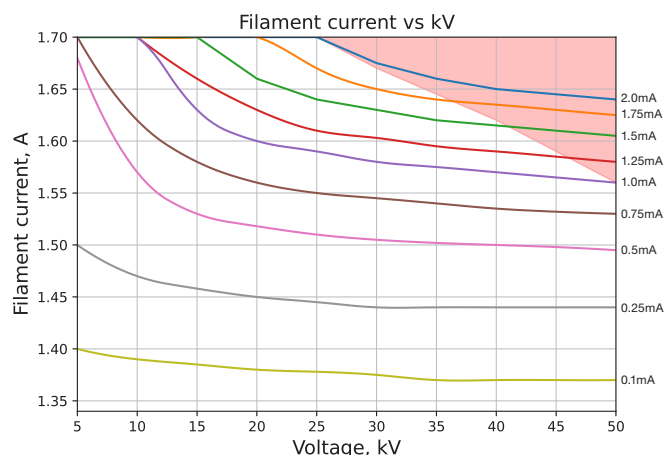


FIGURE 2

